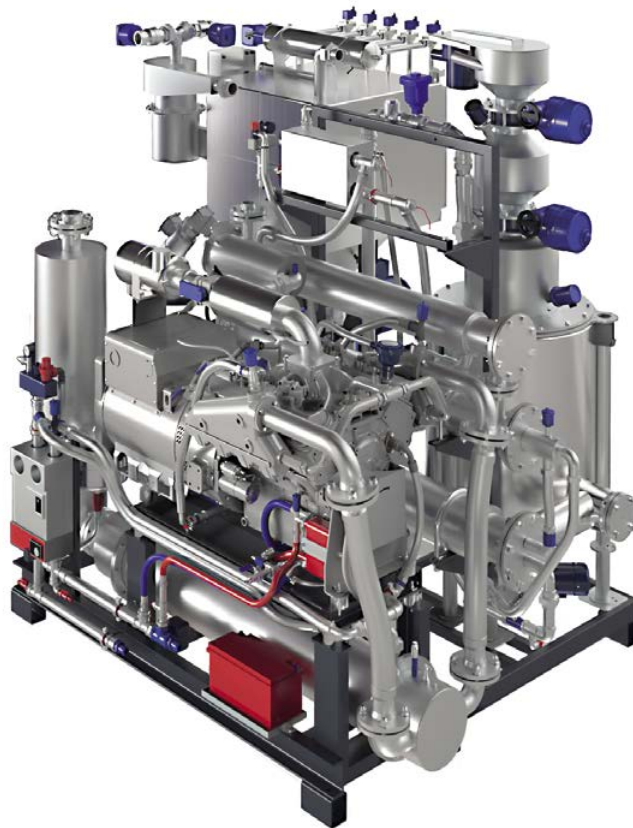


ENTRADE

THE CLEAN ENERGY COMPANY

E4 WOOD CHIPS



ENTRADE

THE CLEAN ENERGY COMPANY



Technical specifications E4 WOOD CHIPS

Electricity:	50 kWel	Duration of installation:	2 - 72 hours
Heat output:	120 kWth	Approval requirements:	regional differences
Efficiency:	85 %	Ash emptying service:	every 10 - 100 hours
electrical efficiency:	25 %	Service oil change:	every 250 - 700 hours
thermal efficiency:	60 %	Service filter change:	every 2,500 hours
Temperature level:	90 °C / 60 °C		
Electrical output:	400 V / 50 Hz	ENTRADE offers extremely low-emission, clean and carbon-neutral energy from wood pellets and selected waste materials.	
Operating hours:	6.000 – 8.000 h/a		
Raw material:	wood chips A1-B2 quality, G30-G50, max. 13% water content		
Fuel requirement:	50 kg/h	• Modular energy systems for industry and trade „Made in Germany“	
Equipment:	Current (3 phases, 64 Amp.), Cooling water, engine oil, paper filter	• Scalable from 25 kW to 5 MW for electricity, heating and cooling.	
Control:	Fully automatic operation 24 h Remote monitoring	• Turnkey commissioning in 2 days	
Volume:	60 dB(A)		
Space requirement:	8 m ² bzw. 20“ sea containers and plus wood chip bunker	ENTRADE provides the most cost effective power generation, which is available around the clock. A new standard for an affordable and reliable power supply.	
Dimensions WxDxH:	3,72 x 1,56 x 2,00 m		

ENTRADE Japan office: 住所: 〒101-0052, 東京都千代田区神田小川町, 3丁目7-5 V O R T 神保町7階
7F VORT Jimbocho, 3-7-5 Kanda Ogawamachi, Chiyoda-ku, Tokyo 101-0052

Web: www.entrade.jp Email: c.wagner@entrade.de Phone: +49 (0) 151 / 58 26 66 06

ENTRADE Energiesysteme AG Berliner Allee 42 D-40212 Düsseldorf Germany

Email: sales@entrade.de Mobile: +49 (0)151 58266606 Phone: +49 (0)211 24 79 23 50 Web: www.entrade.de